

Welcome  
2026 Lake Owasso Association  
Annual Meeting



*Lake Owasso  
Association, Inc.*



## Juan Q. Quitevis

September 9, 1936 — April 6, 2026

Shorview

Listen to Obituary 

Juan Quentin Quitevis, known affectionately to all as "Nito," passed away peacefully on April 6, 2026. He was 89 years old.

A man of dedication, and deep community commitment, Nito leaves behind a legacy defined by his passion for sports, his service to his country and community, and his profound love for his family.

Nito graduated from St. Paul Central High School and was a longtime Shoreview resident, making his home on the shores of Lake Owasso. He was an avid competitor throughout his life, achieving distinction as a runner and a judo black belt. His true passion, however, lay on the water, where he became a state and national water ski champion. His expertise led him to serve as a former judge of the American Water Ski Association and USA Worlds. He dedicated countless hours to promoting safe water use, advocating with the Lake Owasso Association, the City of Shoreview, and the MN Water Ski Association, of which he was a proud member and later inducted into its Hall of Fame.



*Lake Owasso  
Association, Inc.*

# Tonight's theme:

## Engagement/Volunteerism



*Lake Owasso  
Association, Inc.*

# Lake Owasso 1937



# Lake Owasso area 1902



# Engagement Opportunity #1

Submit historical photos (or other photos of interest) for posting on LOA site

[info@lakeowasso.org](mailto:info@lakeowasso.org)



# 2026 Lake Owasso Association Annual Meeting Agenda

Thursday April 23, 7:00pm

- 7:00 Introduction
- 7:05 Historical tidbits/Notable rains/droughts
- 7:10 Approve 2025 minutes; board members
- 7:15 Treasurers report
- 7:20 Aquatic plant/algae balance
- 7:25 Loon notes
- 7:30 AIS updates
- 7:35 MLR and boat launch inspections
- 7:45 2025 and 2026 treatment notes
- 7:50 Water quality and Infiltration around Owasso
- 7:55 Underwater debris
- 8:00 Swimmers itch
- 8:05 Geese and carp removal
- 8:10 New Business
- 8:15 Adjourn



*Lake Owasso  
Association, Inc.*

Annual meeting

April 23, 2026

# Acronyms

LOA	Lake Owasso Association
MAISRC	MN Aquatic Invasive Species Research Center
AIS	Aquatic Invasive Species ZM, EWM, CLP, SSW
RWMWD	Ramsey Washington Metro Watershed District
MLR	MN Lakes and Rivers

ZM



EWM

CLP

SSW



*Lake Owasso  
Association, Inc.*

# Three years in a row with March ice-outs

2024 March 3

2025 March 18

2026 March 28

Average: April 6 (over 75 years)



*Lake Owasso  
Association, Inc.*

# Twin City historic wet/dry periods

Year/Period		Notes (inches of precipitation)
1911		40.15
1965		39.94 inches
1983		39.07 inches
2016		40.32 inches
2019		35.53 (wettest year ever for MN overall)

# Twin City historic drought periods

Year/Period		Notes
1926	Extreme	Lowest recorded 883' (vs highest 888.79 in 1978)
1930-1937	Extreme	1934 driest (Aquifer wells built in early 1930's) Low water revealed leak in lake bottom
1987-1989	Very severe	
2006	Moderate	
2012	Moderate-Severe	
2021-2022	Severe	

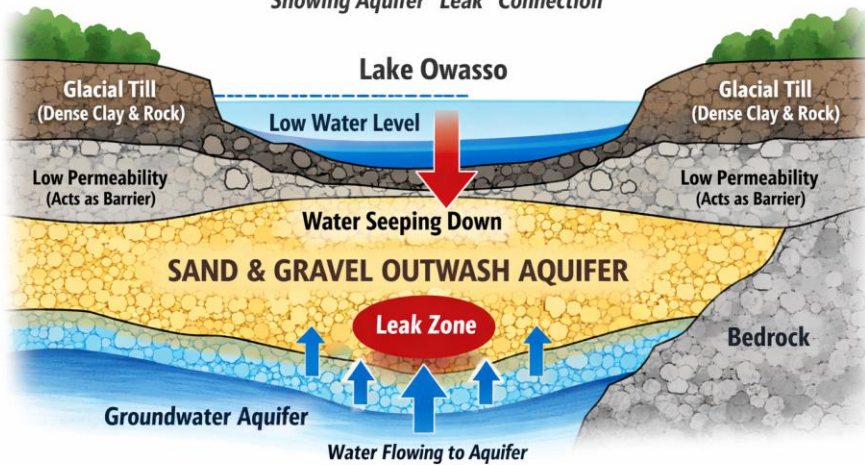
# Chat GPT exaggerated depiction of Lake Owasso substrate

If dominated by glacial outwash plain

If dominated by glacial till

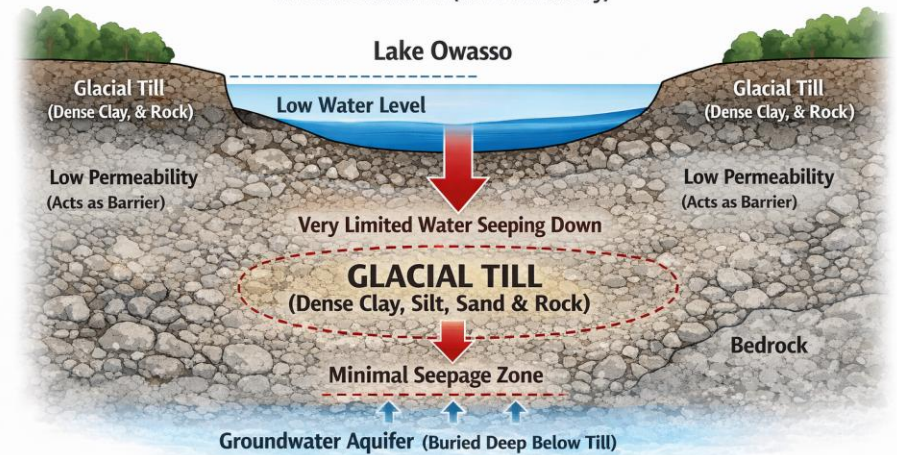
## Lake Owasso Cross-Section

Showing Aquifer "Leak" Connection



## Lake Owasso Cross-Section

All Dense Glacial Till (Low Permeability)



Glacial outwash plains – permeable

Glacial outwash plains tend to occur with rapid glacial retreats

Glacial till – less permeable than glacial outwash plains

Glacial till tend to occur when a glacial retreat temporarily stalls out

# Treasurers Report

Edward Roberts - Treasurer

## Treasurers Report

	2025	2024
<b>Balance on Jan 1</b>	<b>\$ 53,967</b>	<b>\$ 20,495</b>
<b>Contributions</b>		
Aquatic & Membership Fees	\$ 25,525	\$ 88,322
Interest & Grants	\$ 5,145	\$ 1,027
<b>Total Receipts</b>	<b>\$ 30,670</b>	<b>\$ 89,349</b>
<b>Expenses</b>		
Aquatic Plant Control & Permit	\$ 32,029	\$ 51,708
Administration expenses	\$ 1,097	\$ 1,270
Blue Water Science	\$ 2,900	\$ 2,900
<b>Total Expenses</b>	<b>\$ 36,026</b>	<b>\$ 55,878</b>
<b>Balance on Dec 31</b>	<b>\$ 48,611</b>	<b>\$ 53,967</b>

# Late sign-ups

Could result in DNR inspection

Could result in lessor treatment allowance

Could result in more costly individual DNR permit vs being added onto group permit for lake



Lake Owasso Association, Inc.

Founded in 1941

## It's renewal time

We are writing to initiate the 2026 aquatic plant treatment program for Lake Owasso. The fee assessment for the 2026 treatment program is \$4.00 per shoreline foot plus \$10 membership.

Depending on climatic and aquatic factors, the first treatment will likely occur approximately the first week of June, followed by the second treatment, if necessary and allowed.

## Online sign-ups and payments!

Debit/credit card or PayPal accepted. (PayPal account not required). Electronic sign-up is efficient, time-saving, and eliminates postage. **Application Deadline: Tuesday, April 7.**

[Click Here to Sign-up & Pay Online](#)

If you cannot pay electronically, you can also print and submit [this form](#) via US Mail with your check to PO Box 130413, Roseville, MN 55113.

Our records indicate the shoreline footage for 460 West Horseshoe Dr is 57 ft.

You are allowed up to 50% or 100 ft of owned shoreline, whichever is less (e.g. own 80', max allowed 40', cost would be 40' x \$4.00 = \$160 + \$10 membership for \$170 total). If your lot is less than 70' you are allowed up to 35' of treatment.

For questions please contact:

- [info@lakeowasso.org](mailto:info@lakeowasso.org)
- [www.lakeowasso.org](http://www.lakeowasso.org)

# 2025 Treatment



# Native rebound post fluridone

Large leaf pondweed  
(Early part of 2025)

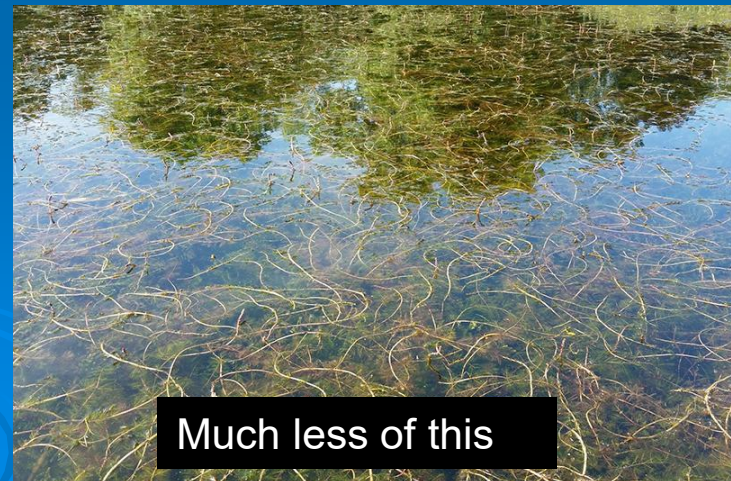


Flatstem pondweed  
(later part of 2025)

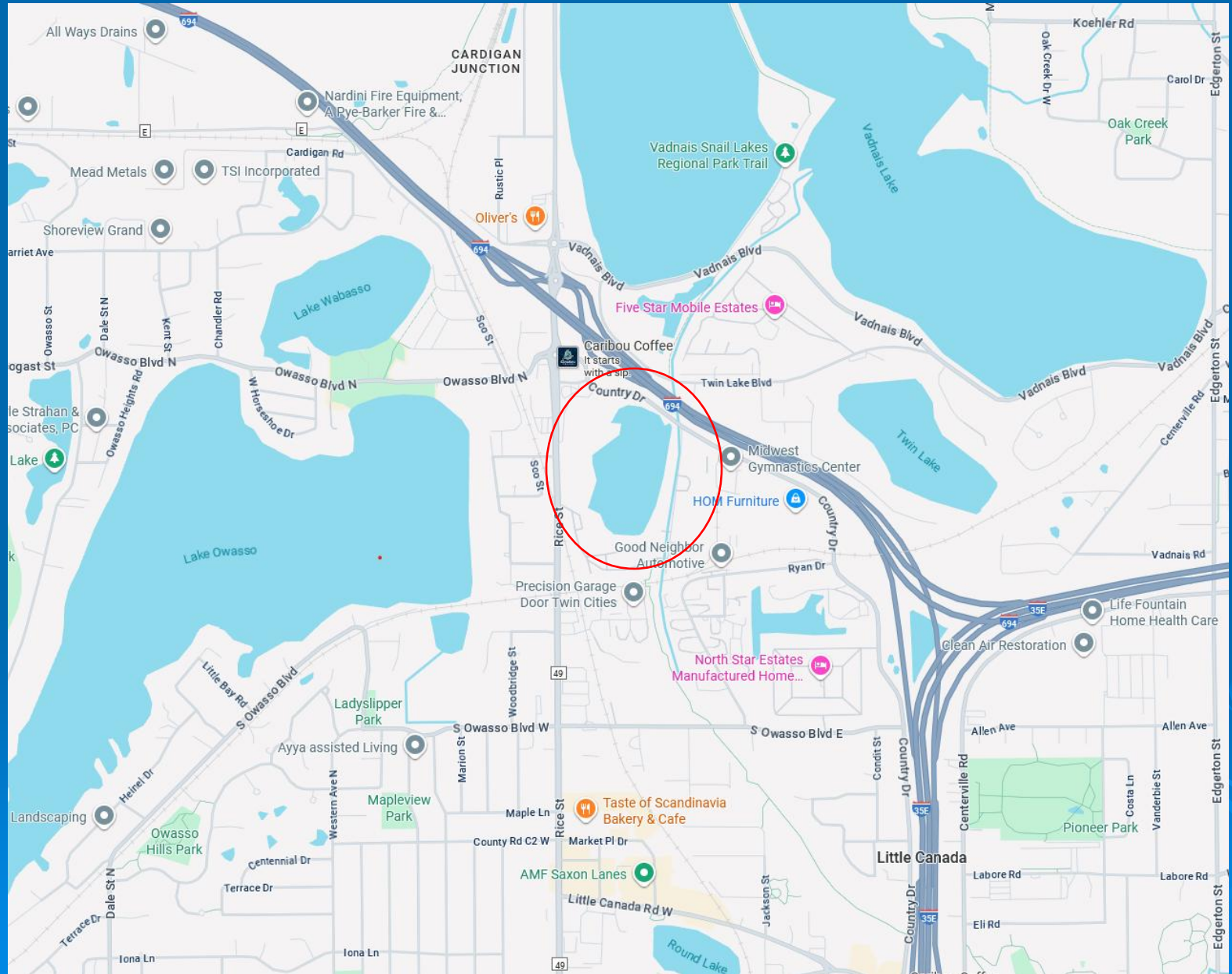


# The LLP vs EWM trade-off

LLP	EWM
<b>Does not surface mat</b> (less propellor impedance than EWM)	<b>Mats at the surface</b> (navigational challenge for propellers)
<b>Open architecture</b> (less propeller impedance than EWM)	<b>Densely packed</b> (pontoons can get stuck in a dense patch)
<b>Large leaf surface area</b> (absorbs nutrients that could otherwise result in heightened planktonic algae - green lake)	<b>Less surface area than LLP</b> may not absorb as many nutrients as LLP.
<b>Good fish habitat</b> (according to DNR and angling experts)	<b>Tangled fish lines</b>
<b>Native</b> (likely present since shortly after the last ice age)	<b>Invasive</b> (newly introduced on Owasso in 2000) and outcompetes natives



# Blackturn pond



# Blackturn Pond



## Kayaking thru dense vegetation on Blackturn Pond August 12, 2025

- Dense surface matt
- Two primary plants
  - Elodea (native)
  - Coontail (native)
- Crystal clear water



# The balancing act



Balanced treatment



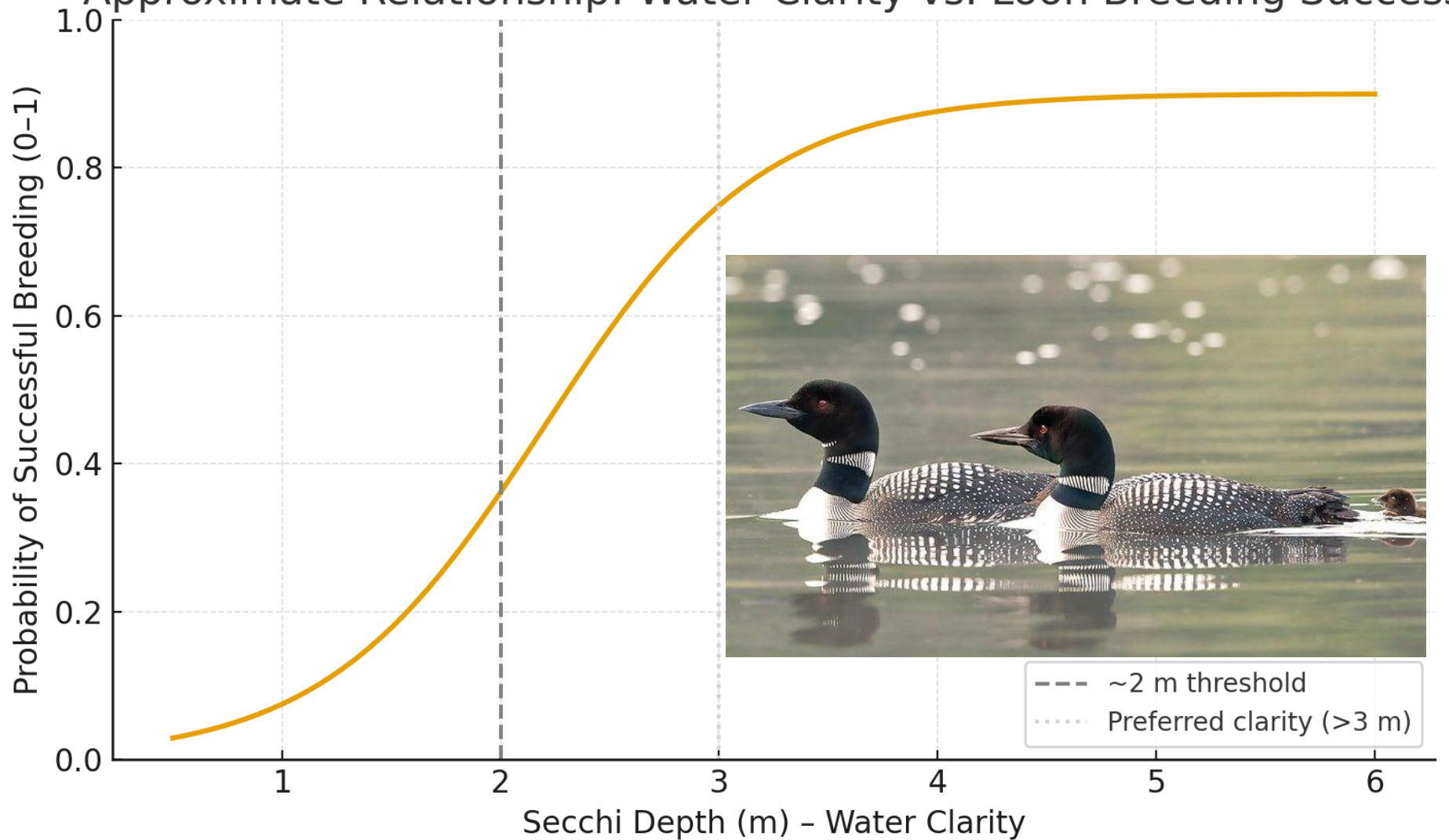
Over treatment



No treatment



# Approximate Relationship: Water Clarity vs. Loon Breeding Success



# Distinguishing juveniles from molting adults

Juvenile



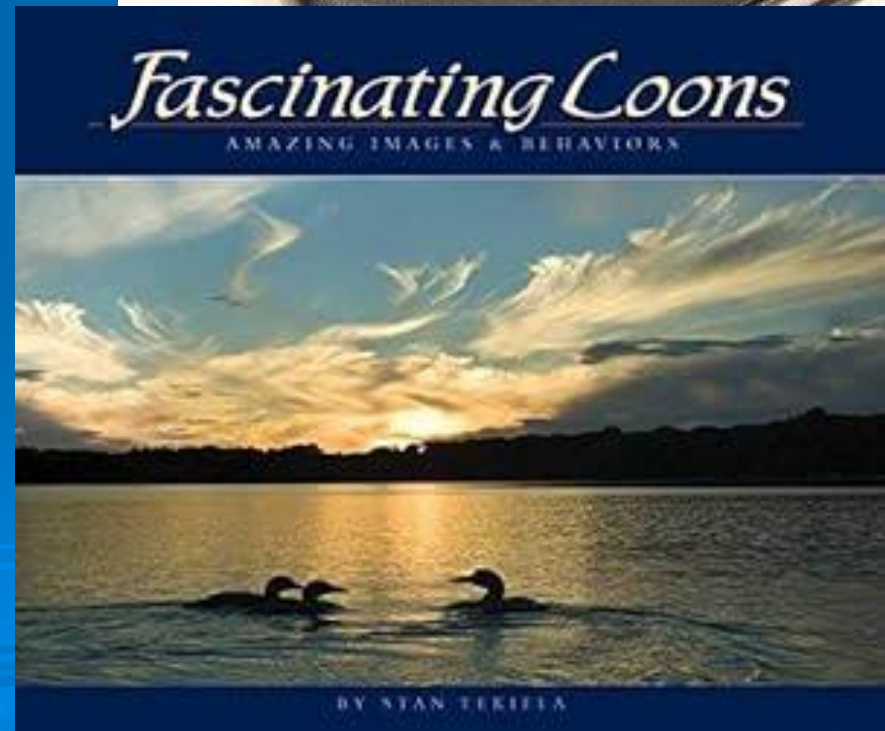
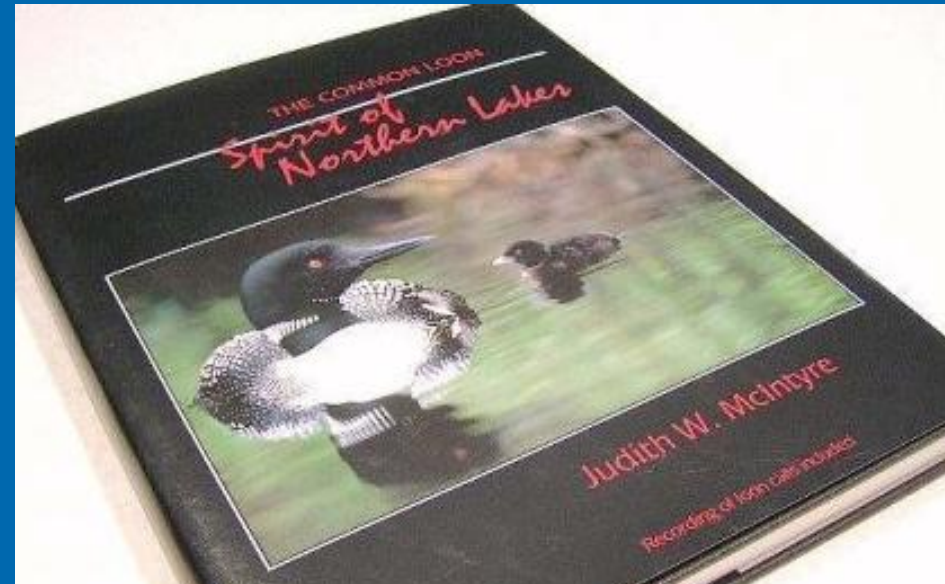
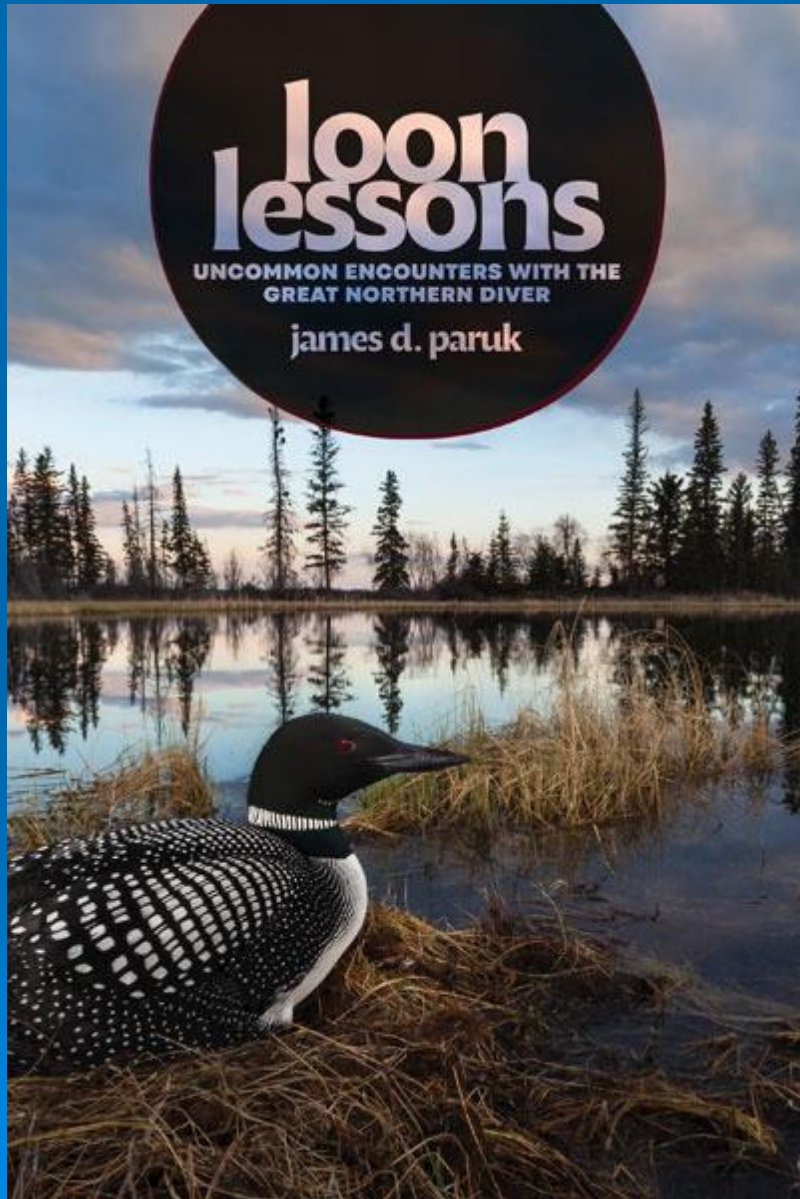
Scaly back

Molting adult



Beak gets lighter but still retains some darkness

Trickles of white plumage retained



# AIS

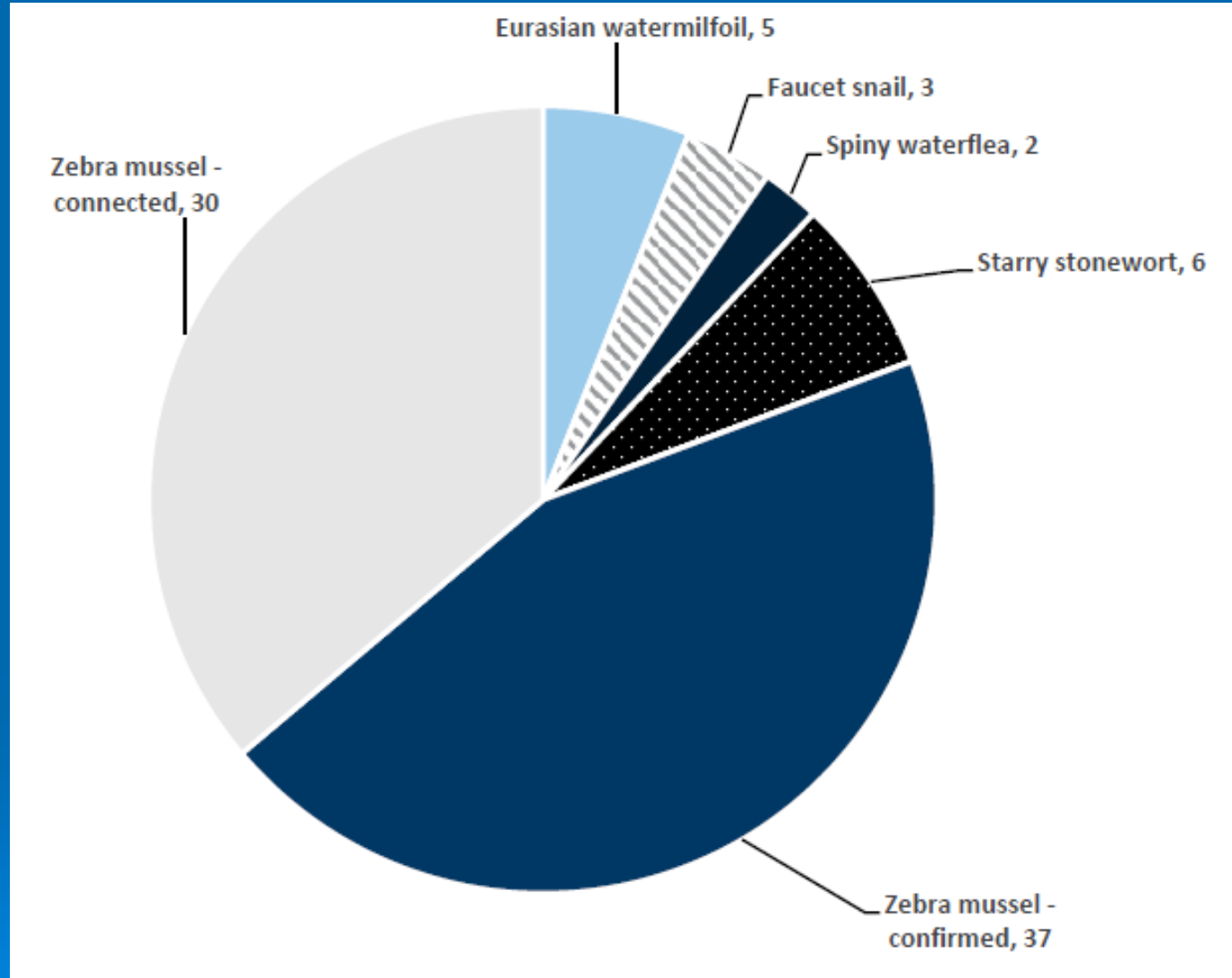


# Newly infested water bodies in 2025

Source: 2025 DNR Report

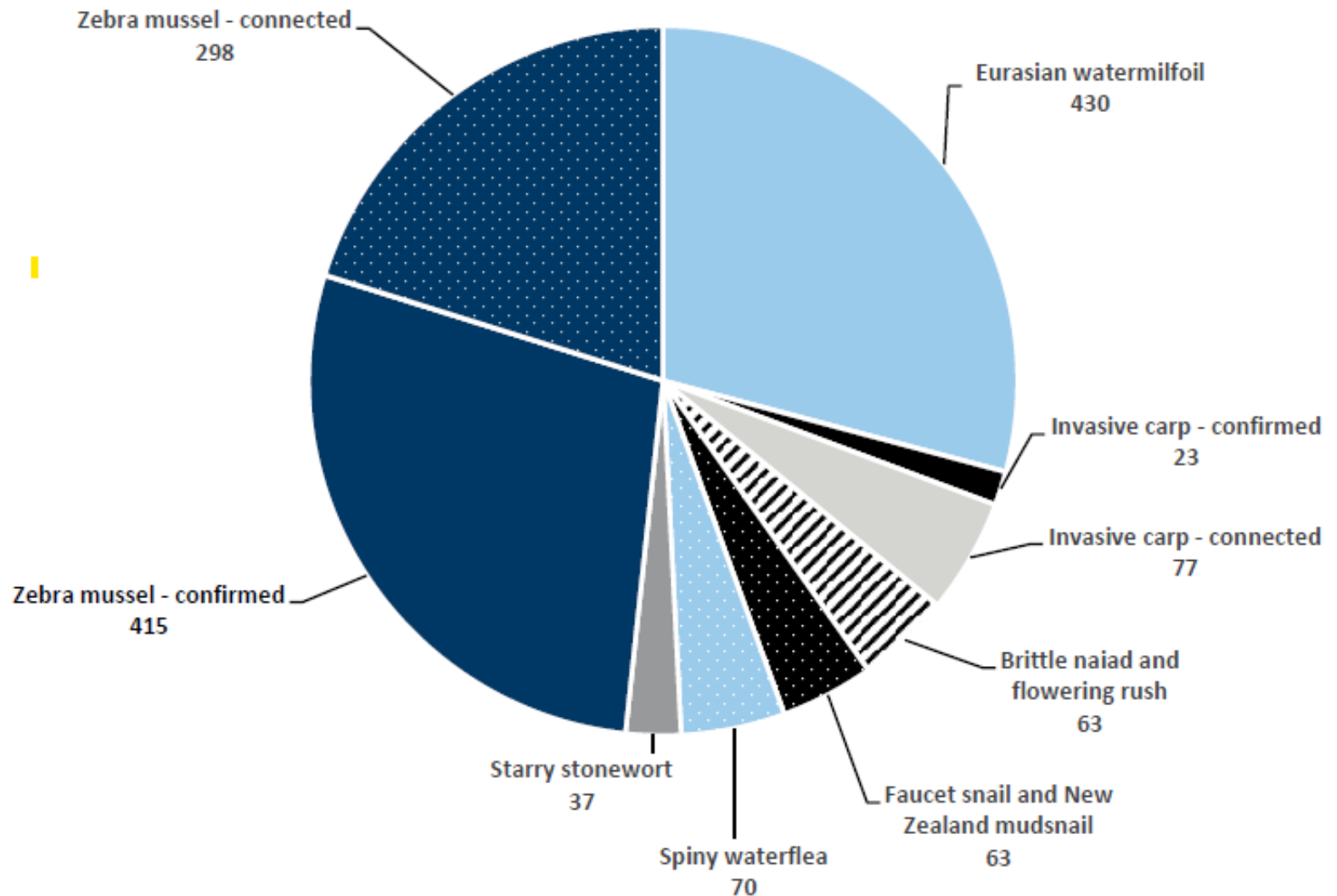


Pages 16 and 17



Lake Owasso  
Association, Inc.

## Total water bodies listed as infested:



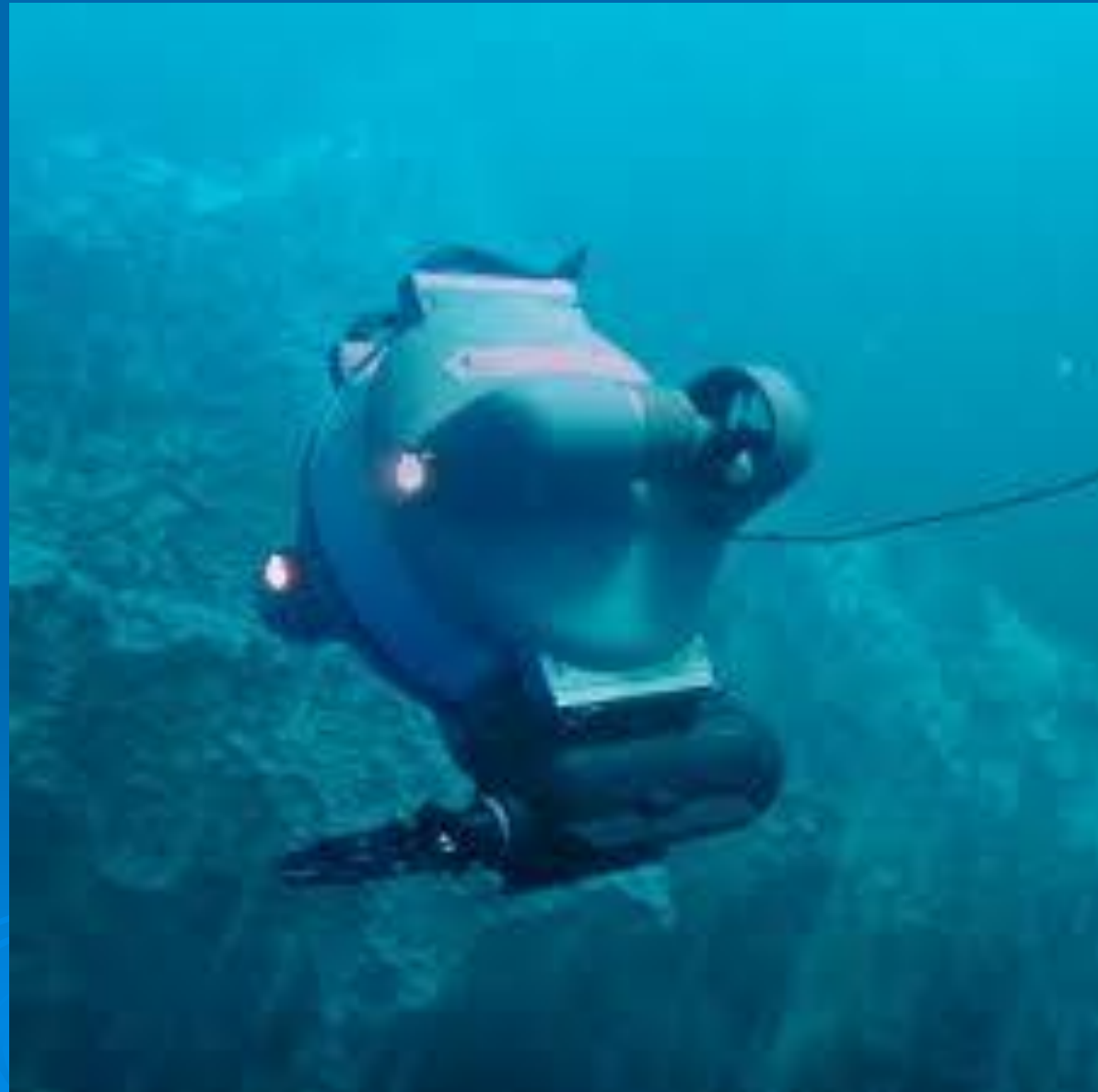
# What makes SSW problematic



- SSW requires less sunlight than EWM
- SSW thrives in deeper water than EWM
- SSW matt density exceeds EWM matt density
- SSW have no vascular system (unlike EWM) making herbicides (including fluridone) less effective
- SSW Bulbils store significant energy (starch) for regrowth, making SSW extremely resilient
- Stays green under the ice when its native cousin (Stonewort) turns brown
- Less effected by known herbicides
- **Late season – (sneaks in under the radar)**



Deployment of an underwater ROV on Rush Lake near Breezy Point to identify/map SSW for hand removal



*Lake Owasso  
Association, Inc.*

# Rake toss



# Volunteer Opportunity #2

Build a rake toss

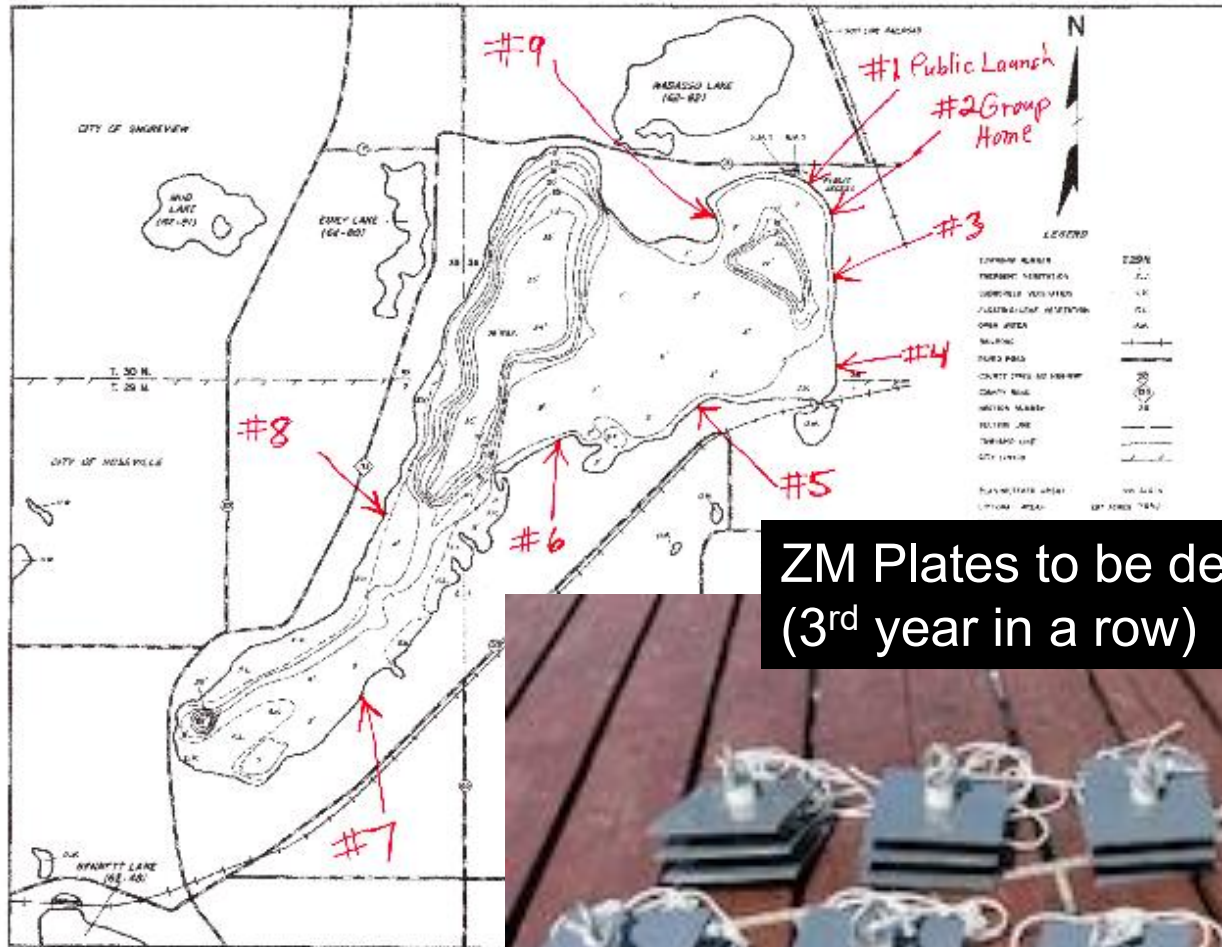
Learn how to identify certain species

Perform rake tosses

Record pertinent findings and locations



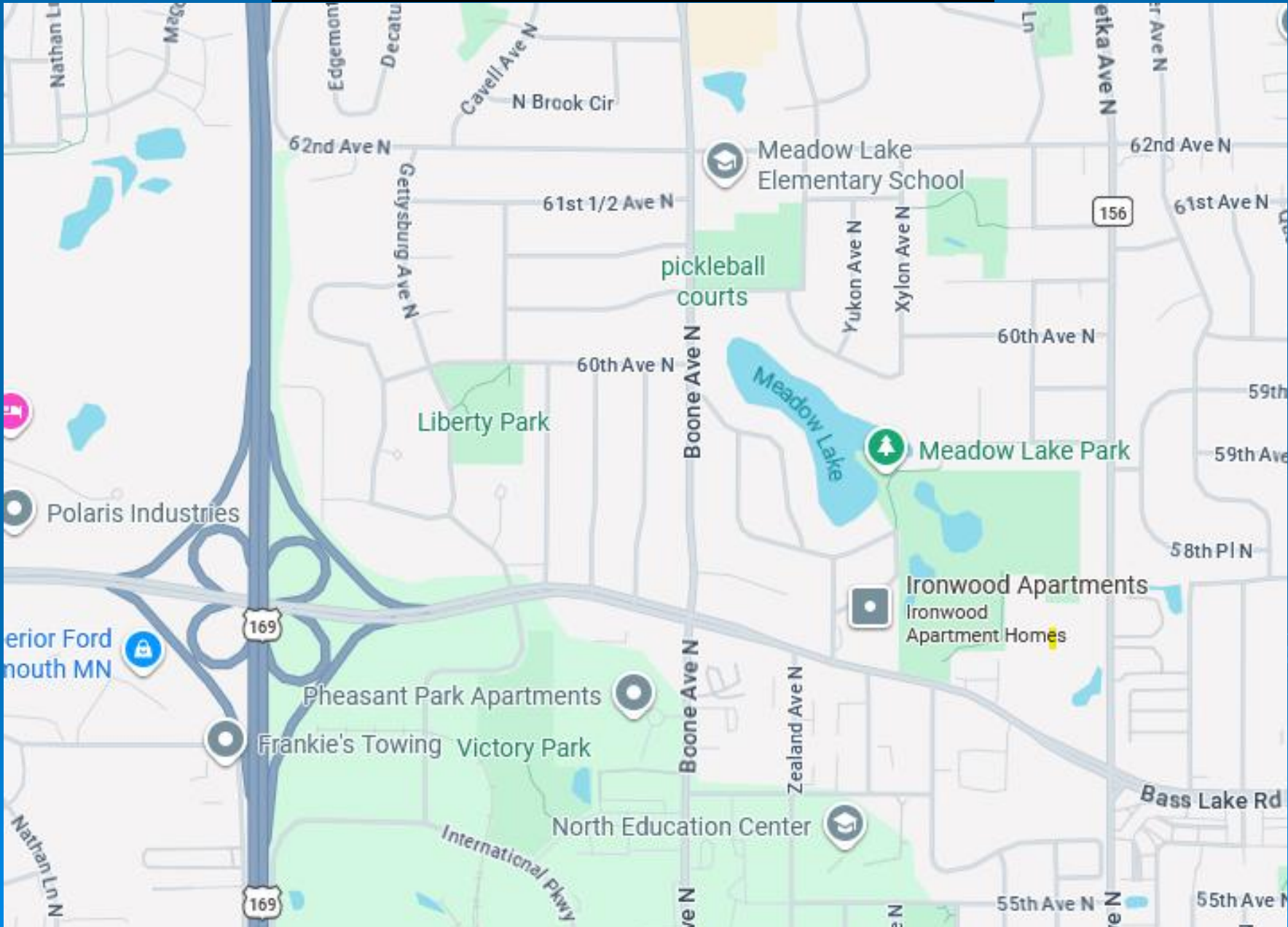
9 ZM Sampling Sites 2024  
to be repeated in 2025



ZM Plates to be deployed again in 2026  
(3<sup>rd</sup> year in a row)



# Meadow Lake in New Hope



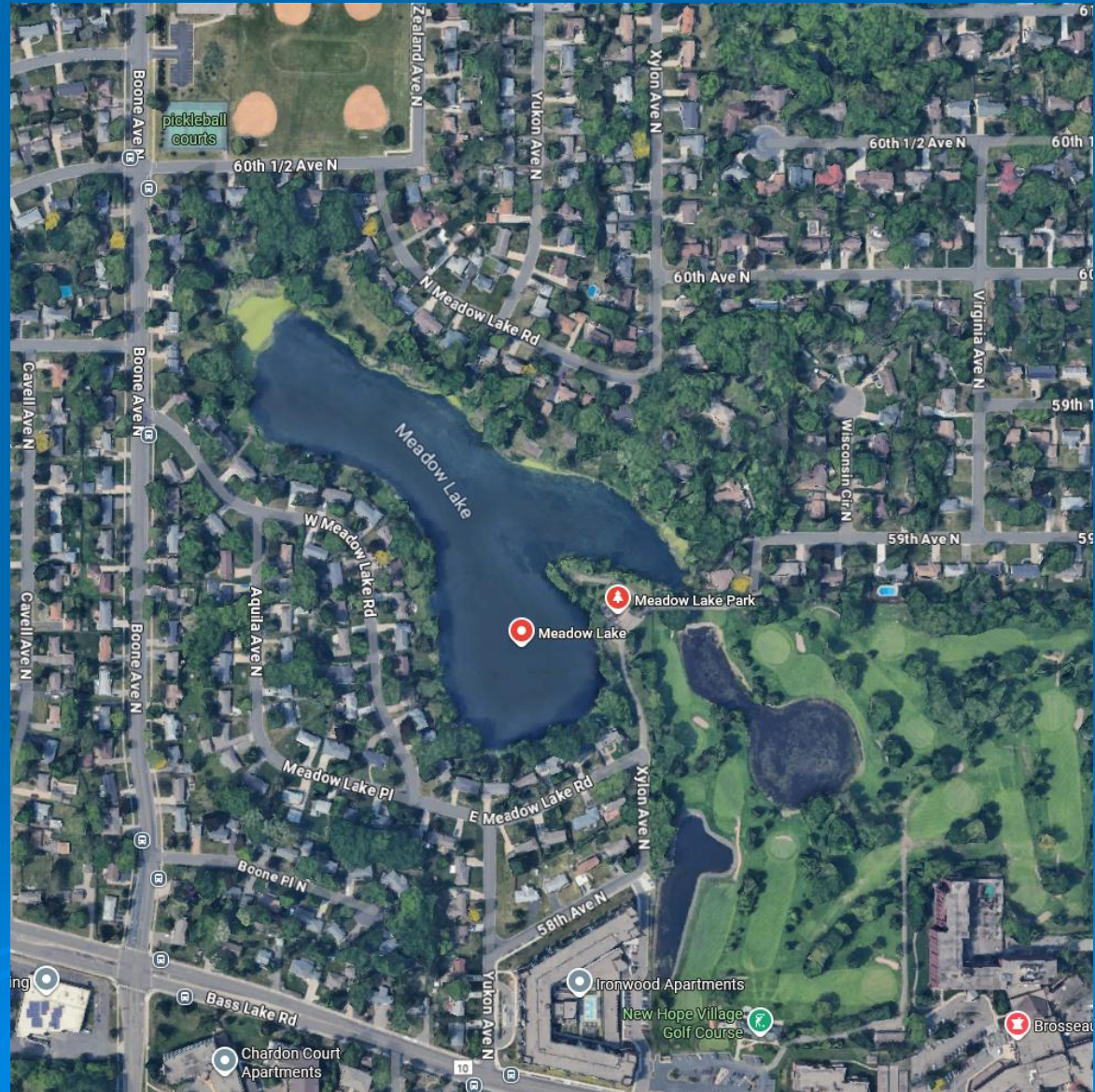
# How resilient are Curlyleaf Pondweed turions?

Meadow Lake – New Hope

2021 Drawdown

Consulting engineer:  
Stantec

Turions survived  
winter freeze even  
after water removal



# eDNA

More of this coming in the future

Fast low-cost method for early detection (citizen science)

An imperfect science: some false negatives and positives

Positive findings normally followed up with more detailed site inspections

Tends to be more accurate for animals than plants



# MLR – MN Lakes and Rivers



The screenshot shows the top portion of the Minnesota Lakes & Rivers website. At the top right, there are links for 'Contact Us', 'Facebook', 'Instagram', and 'Bluesky'. Below this is a green navigation bar with the following menu items: 'About Us', 'Citizen's Action Network', 'Lakeshore Property Taxes', 'Natural Shorelines & Lake Steward', 'Aquatic Invasive Species', and 'Resources'. A prominent orange button labeled 'Support MLR' is on the right. The main hero image features two children jumping joyfully from a yellow floating dock into a lake, with a dense forest in the background. Overlaid on the right side of the image is the text: 'Protecting Minnesota's lake and river heritage since 1994'.



*Lake Owasso  
Association, Inc.*

## The three sides of Minnesota Lakes & Rivers (MLR)

Minnesota Lakes & Rivers Advocates 501 (c)(4) (MLRA)

Lobbying at the Minnesota Capitol, building lake association capacity, and supporting scientific research on water quality issues.

Minnesota Lakes & Rivers Protection & Education 501 (c)(3) (MLR P&E)

Leading education and outreach programs to address aquatic invasive species, shoreline, and water quality issues.

Minnesota Lakes & Rivers Political Action Committee (MLR PAC)

Supporting pro-water candidates in state and local elections.

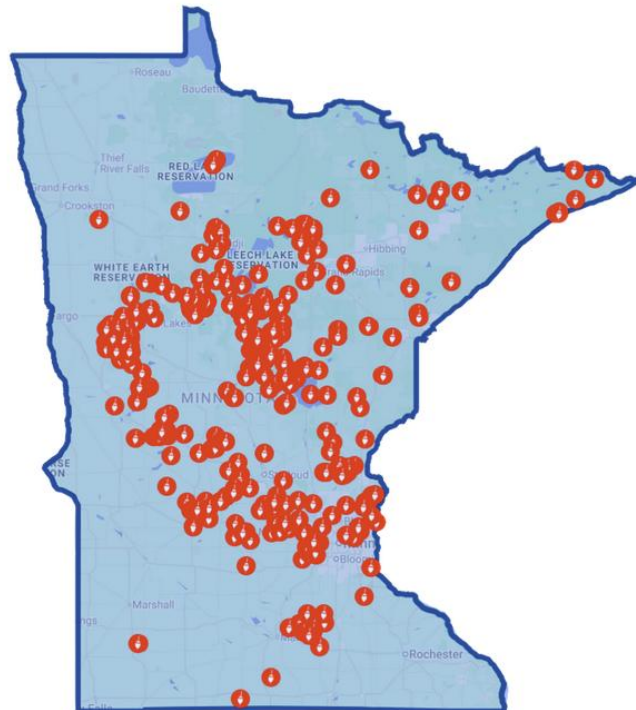
## 300+ Lake Associations support MLR

The work of MLR Advocates is also supported by nearly 300 lake and river associations, lake improvement districts, county coalitions, businesses, and partner organizations across the state.

Together, these groups represent a powerful statewide network of institutions committed to protecting Minnesota's lakes and rivers for current and future generations.

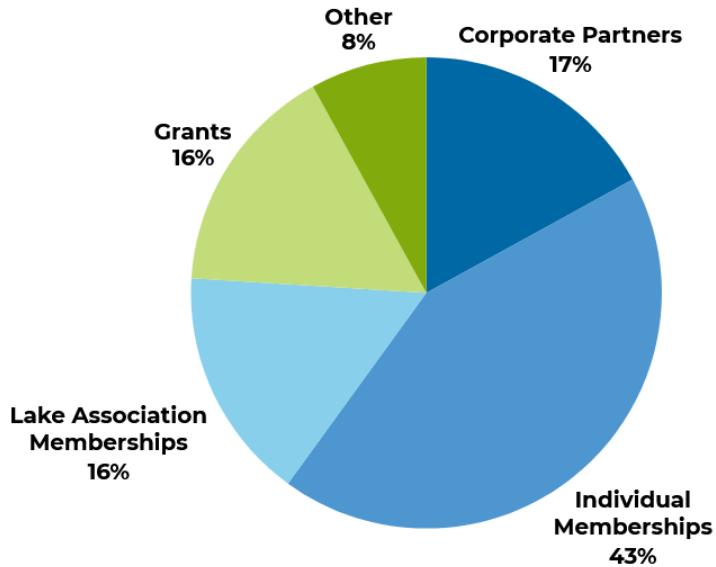
MLR Advocates works to provide connection, programming, and advocacy on behalf of these organizations—the true powerhouses preserving water quality across our state.

We extend our sincere thanks to the following institutions for your generous support of this network. Your partnership strengthens our collective voice, deepens our impact, and advances our shared mission to safeguard Minnesota's natural waters.

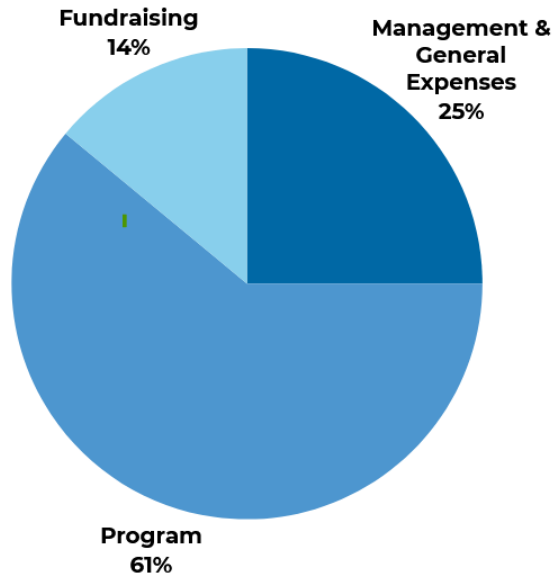


*Lake Owasso  
Association, Inc.*

# Revenue



# Expenses



# MLRA Financial Statements

Year Ending December 31, 2024 and 2025

## MLRA Statements of Financial Position December 31, 2025 and 2024

<b>Assets</b>	<b>2025</b>	<b>2024</b>
Cash Accounts	\$54,326	\$43,203
Accounts Receivable	<u>\$89,490</u>	<u>\$59,240</u>
<b>Total Assets</b>	<b><u>\$143,816</u></b>	<b><u>\$102,443</u></b>
<b>Liabilities &amp; Net Assets</b>		
Accounts Payable	\$2,224	\$0
<b>Net Assets</b>	<u>\$141,592</u>	<u>\$102,443</u>
<b>Total Liabilities and Net Assets</b>	<b><u>\$143,816</u></b>	<b><u>\$102,443</u></b>

## MLRA Statements of Activities Years Ended December 31, 2025 and 2024

<b>Revenue</b>	<b>2025</b>	<b>2024</b>
Corporate Partnerships	\$69,545	\$16,000
Contributions from Individuals	\$178,953	\$196,455
Contributions from Lake Associations	\$67,448	\$56,148
State of Minnesota Grants	\$68,562	\$87,418
Other	<u>\$35,984</u>	<u>\$50,382</u>
<b>Total Revenue without CD3s</b>	<b>\$420,492</b>	<b>\$406,403</b>
State of Minnesota CD3 Grants	<u>\$260,314</u>	<u>\$81,802</u>
<b>Total Revenue with CD3s</b>	<b><u>\$680,806</u></b>	<b><u>\$488,205</u></b>
<b>Expenses</b>		
Program	\$232,994	\$227,214
Management & General Expenses	\$95,775	\$65,359
Fundraising	<u>\$52,574</u>	<u>\$82,249</u>
<b>Total without CD3 Expenses</b>	<b>\$381,343</b>	<b>\$378,849</b>
CD3 Expenses	<u>\$260,813</u>	<u>\$81,802</u>
<b>Total Expenses with CD3s</b>	<b><u>\$642,156</u></b>	<b><u>\$460,651</u></b>
<b>Change in Net Assets</b>	<b>\$39,149</b>	<b>\$27,554</b>
Net Assets Beginning of Year	<u>\$102,443</u>	<u>\$74,889</u>
<b>Net Assets End of Year</b>	<b><u>\$141,592</u></b>	<b><u>\$102,443</u></b>



Minnesota Lakes & Rivers  
**AQUATIC INVADERS SUMMIT 2027**

**LATEST SCIENCE, NEW DIRECTIONS**  
**March 9 - 10, 2027**  
**in St. Paul, MN**

## 2027 Aquatic Invaders Summit

REGISTRATION COMING SOON!



**The Aquatic Invaders Summit is returning in 2027.**

This one-of-a-kind gathering brings together lake and river enthusiasts, advocates, researchers, and policy makers from across Minnesota – and around the world – to share knowledge, network, and take action against aquatic invasive species (AIS).

It's time to come together again to protect the waters we love. Learn from experts, connect with fellow lake leaders, and help shape real



*Lake Owners  
Association*



# BOAT LAUNCH INSPECTIONS



*Lake Owasso  
Association, Inc.*

# AIS Boat launch inspections in Ramsey County

Inspected by	2024	2025
Ramsey County	5,839	6,259
DNR	2,145	1,701



*Lake Owasso  
Association, Inc.*

Source: Justin Townsend of Ramsey County

352 of the 6,259 were on Owasso (5.6%)

Note: 36 lakes in Ramsey County

54 of DNR's 1,701 were of Owasso

# Lake Owasso boat launch inspections by Ramsey County in 2025

Total hours worked:	102.7
Total number of inspections:	352
Avg Inspections/hr:	3.4
Number of inspection dates:	29
Avg hrs/inspection date:	3.5



*Lake Owasso  
Association, Inc.*

Home > Nature > Invasive species > Aquatic Invasive Species

**Aquatic Invasive Species**

Main page

**What you should do**

Programs and reports

Guide to Aquatic Invasives

Infested Waters List

Outreach materials

Invasive Carp

Training and Permits

Laws and regulations

AIS Advisory Committee

**Contact an Expert**

Aquatic Invasive Species

Terrestrial Invasive Species

## What you should do

Invasive plants, animals and diseases can harm lakes, rivers, streams, wetlands, water quality, and wildlife habitat. People can unintentionally spread invasive species by moving boats, gear, and equipment from one waterbody to another or releasing non-native species into the environment. No matter how you enjoy the outdoors, always take these actions to prevent the spread of aquatic invasive species (AIS).

**Whether or not a lake has invasive species, Minnesota law requires people to:**

- **Clean** watercraft, trailers, gear, and equipment to remove aquatic plants and prohibited invasive species.
- **Drain** all water and leave drain plugs out during transport.
- **Dispose** of unwanted bait in the trash.
- **Never release** bait, plants, or aquarium pets into Minnesota waters.
- **Dry** docks, lifts, and rafts for 21 days before moving them from one waterbody to another.

**These additional steps reduce the risk of spreading AIS:**

- **Decontaminate** watercraft and equipment – find free stations on the courtesy decontamination webpage of the DNR website ([mndnr.gov/decon](http://mndnr.gov/decon)).
- **Spray** my equipment with high-pressure water or **rinse** it with water.
- **Dry** watercraft and equipment for at least five days before using in another water body.

Find more details about [practicing "Clean In, Clean Out" here](#).

**How do you enjoy Minnesota waters? Click an activity to discover how you can protect our lakes, rivers, streams, and wetlands from aquatic invasive species.**



*Lake Owasso  
Association, Inc.*

# Engagement Opportunity #3

Provide feedback regarding  
boat launch inspections

[info@lakeowasso.org](mailto:info@lakeowasso.org)



*Lake Owasso  
Association, Inc.*

# Additional 2025 and 2026 Treatment notes



*Lake Owasso  
Association, Inc.*

---

## Lake Owasso, Ramsey County: 2025 Aquatic Vegetation and AIS Surveys

---

Point Intercept Survey, Meander Survey, and Public Access Survey:  
June 2, 2025

Prepared for:  
Lake Owasso Lake  
Association  
Ramsey Co, MN



June 26, 2025

Prepared by:  
Steve McComas  
Jo Stuckert  
Connor McComas  
Blue Water Science  
St. Paul, MN 55116

2025 Aquatic Plant survey

Follow-up to 2024 survey

Paid for with a DNR grant

Rebound of natives: large  
leaf pondweed, and flat stem  
pondweed

Trace patches of EWM in far  
southwest bay

## Lake Owasso Eurasian Watermilfoil June 2, 2025

June 2 - trace EWM identified

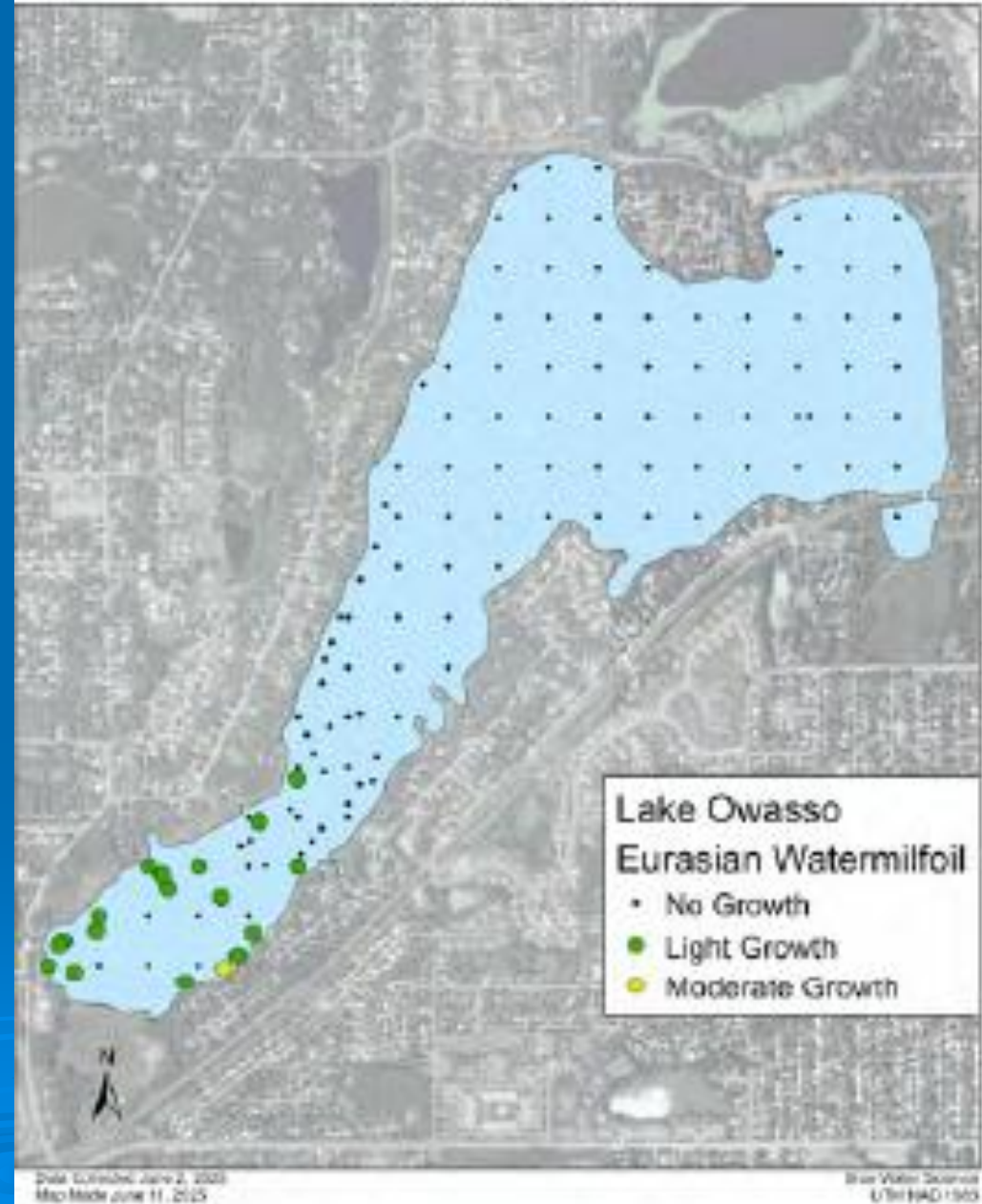
June 27<sup>th</sup>— detailed follow-up inspection for precise GPS coordinates

August 11 – EWM spot treatment in far southwestern bay

June 2026 delineation survey near green dots by Blue Water Science.

Expectation of more CLP in the absence of EWM

More detailed inspection in south end of lake



# North Owasso Blvd

Permeable pavers removed on main portion of road

Pavers retained on boulevards

Maintenance cost became excessive



Looking east on North Owasso Blvd



Looking west on North Owasso Blvd.



Rain garden on south side of road retained

# Woodbridge/East Owasso Lane

Some pavers from North Owasso Blvd. transferred to Woodbridge.





Rain garden to south of pavers retained.  
Prescribed burn on restored shoreline (in yellow)

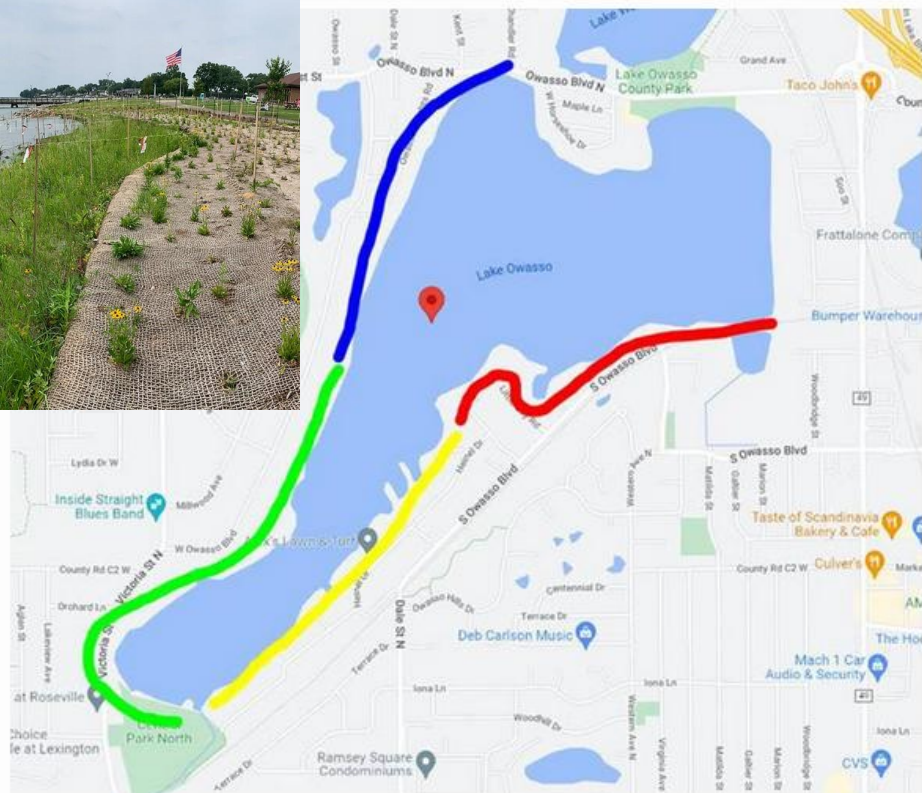




# Infiltration via Shoreline restoration by RWMWD

## Future Phases

Based on RWMWD's assessment, the areas highlighted on the map below will tentatively be targeted in this priority order: yellow, red, green, and finally blue. Most likely one colored area per year, but this is a rough planning estimate at this point. Plans can and will change based on available resources. Please direct any questions or comments to Paige at [paige.ahlborg@rwmwd.org](mailto:paige.ahlborg@rwmwd.org) or (651) 792-7964.



# Lake health scores

Posted on DNR web site

## Health Assessment



Search Lakes

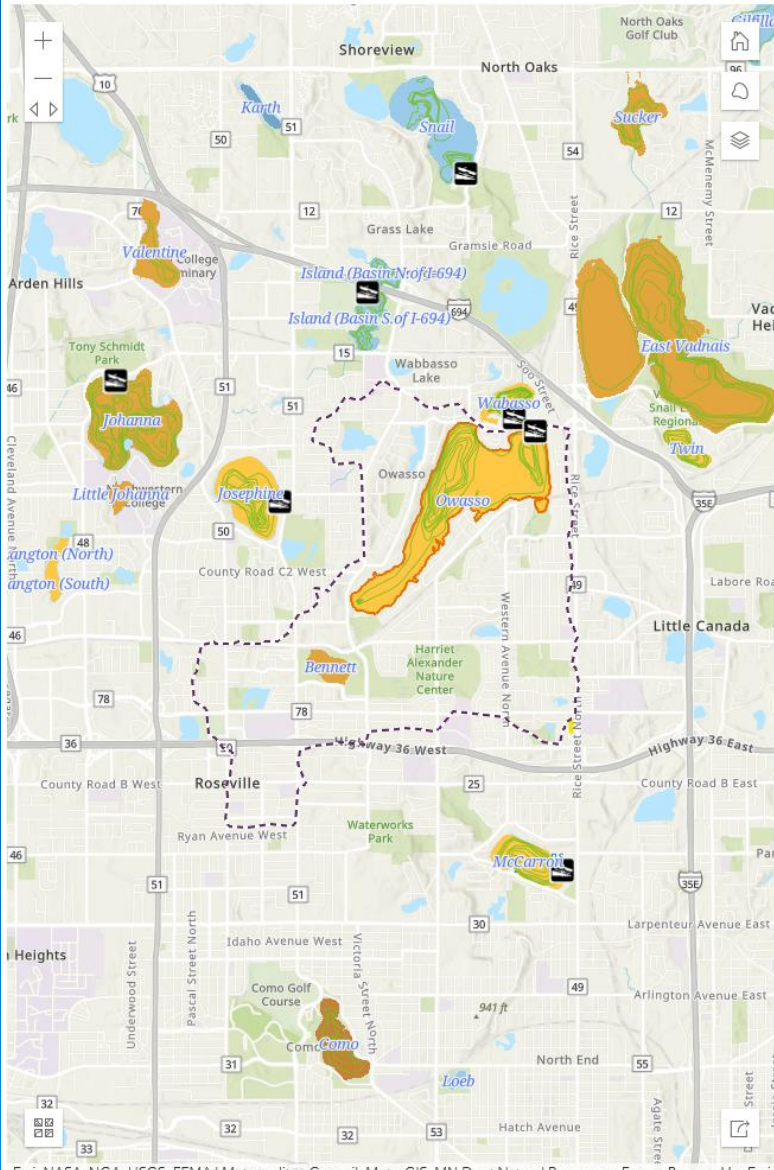
Lake Name or Lake ID

Owasso (62005600)

Go to Lakes List

Previous Lake

Next Lake



Lake Health

A healthy lake is one that is near its natural state. Water entering the lake has low levels of pollution. A healthy lake is protected by a natural shoreline and by investments in careful stewardship of the lake and its watershed (lakeshed).

About the Score

The Lake Health Score is an average of the Water Quality, Biology, & Hydrology scores.

Lake Health Score (▲): 50

Lake Health Grade: C

Lake Health Score Major Watershed Mean (●): 47

Lake Health Score Major Watershed Min/Max: 20/80

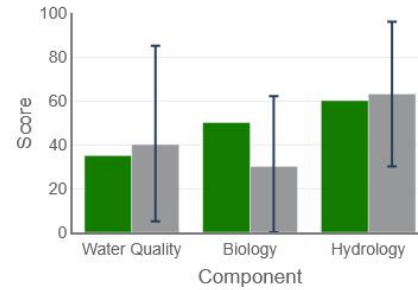


F

A+

Lake Health Component Scores

■ Lake Score  
■ Major Watershed Mean



More

1 scale.

Water Quality Score: 35

Water Quality Score Major Watershed Mean: 40; Min/Max: 5/85

Biology Score: 50

Biology Score Major Watershed Mean: 30; Min/Max: 0/62

Hydrology Score: 60

Hydrology Score Major Watershed Mean: 63; Min/Max: 30/96

Component Input Status

Each component score is created by combining data inputs. Some of these data inputs have a target value labeled a 'goal' or 'threshold'. If an input value is:

- **"Below (Goal or Threshold)"**, the condition for the lake has degraded to the point that it may not support one or more desired outcomes (e.g., water clarity quality, natural diversity of plants and animals).
- **"At or Above (Goal or Threshold)"**, the condition for the lake currently meets or exceeds the minimum criteria to support these desired outcomes.

Water Quality

Phosphorus: At or Above Goal

Water Clarity: Below Goal

Biology

Fish Community Quality: At or Above Threshold

## Lake Search

Search Lakes

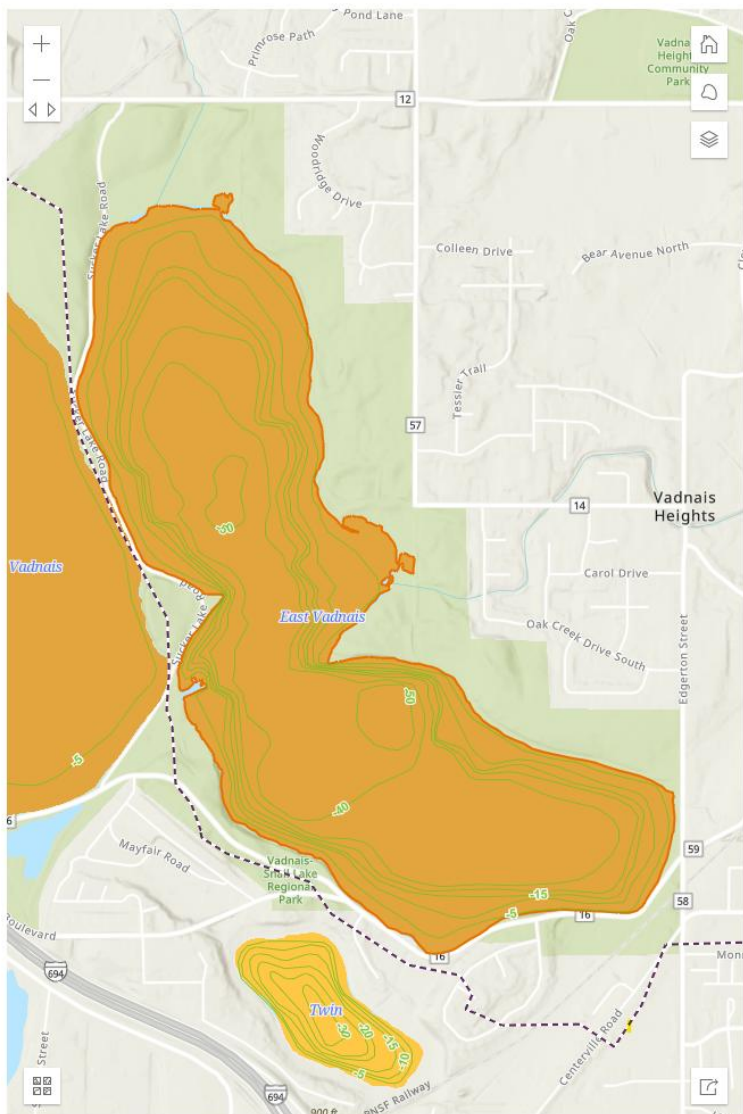
Lake Name or Lake ID

East Vadnais (62003801)

Go to Lakes List

Previous Lake

Next Lake



### SUMMARY

### WATER QUALITY

### BIOLOGY

### HYDROLOGY

### STEWARDSHIP

## Lake Health

A healthy lake is one that is near its natural state. Water entering the lake has low levels of pollution. A healthy lake is protected by a natural shoreline and by investments in careful stewardship of the lake and its watershed (lakeshed).

### About the Score

[Learn More](#)

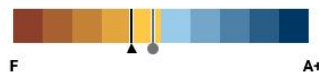
The Lake Health Score is an average of the Water Quality, Biology, and Hydrology Lake Health Component Scores and is on a 0 to 100 scale.

Lake Health Score (▲): 40

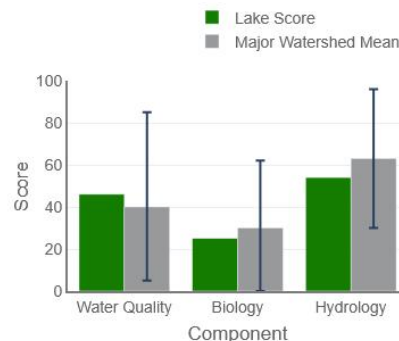
Lake Health Grade: D+

Lake Health Score Major Watershed Mean (●): 47

Lake Health Score Major Watershed Min/Max: 20/80



### Lake Health Component Scores



**Water Quality Score: 46**

Water Quality Score Major Watershed Mean: 40; Min/Max: 5/85

**Biology Score: 25**

Biology Score Major Watershed Mean: 30; Min/Max: 0/62

**Hydrology Score: 54**

Hydrology Score Major Watershed Mean: 63; Min/Max: 30/96

### Component Input Status

Each component score is created by combining data inputs. Some of these data inputs have a target value labeled a 'goal' or 'threshold'. If an input value is:

- **"Below (Goal or Threshold)"**, the condition for the lake has degraded to the point that it may not support one or more desired outcomes (e.g., water clarity quality, natural diversity of plants and animals).
- **"At or Above (Goal or Threshold)"**, the condition for the lake currently meets or exceeds the minimum criteria to support these desired outcomes.

### Water Quality

**Phosphorus:** At or Above Goal

**Water Clarity:** At or Above Goal

### Biology

**Fish Community Quality:** Not Evaluated

# Old Ladies against underwater garbage (OLAUG)

Click image for video



## OLD LADIES AGAINST UNDERWATER GARBAGE





Lake Owasso  
Association, Inc.

# Spike in Swimmers Itch

Environmental News

Kirsti Marohn · North Oaks, Minn. · September 22, 2025 4:00 AM

## Scientists look for cause of spike in swimmer's itch plaguing Minnesota lakes



University of Minnesota PhD student Amanda Schuermann collects snail samples at a private beach on Pleasant Lake in North Oaks, Minn., on Sept. 15. Schuermann is studying whether there's a connection between aquatic invasive species and an increase in swimmer's itch cases. [Ben Hovland](#) | MPR News



**Listen** Scientists look for cause of spike in swimmer's itch plaguing Minnesota lakes

Save



SHARE

Marjorie Mathison Hance's five grandchildren love spending time in the water at her place on Pelican Lake in Otter Tail County.

But she said one summer day in 2020, they emerged from the water, their skin blistering with hundreds of itchy, red welts. It took six weeks for one of the children's sores to clear up.

"They were crying and really agitated, because it's a very painful and very aggressively itchy swimmer's itch," Hance said. Her grandchildren no longer want to go in the water, she said.

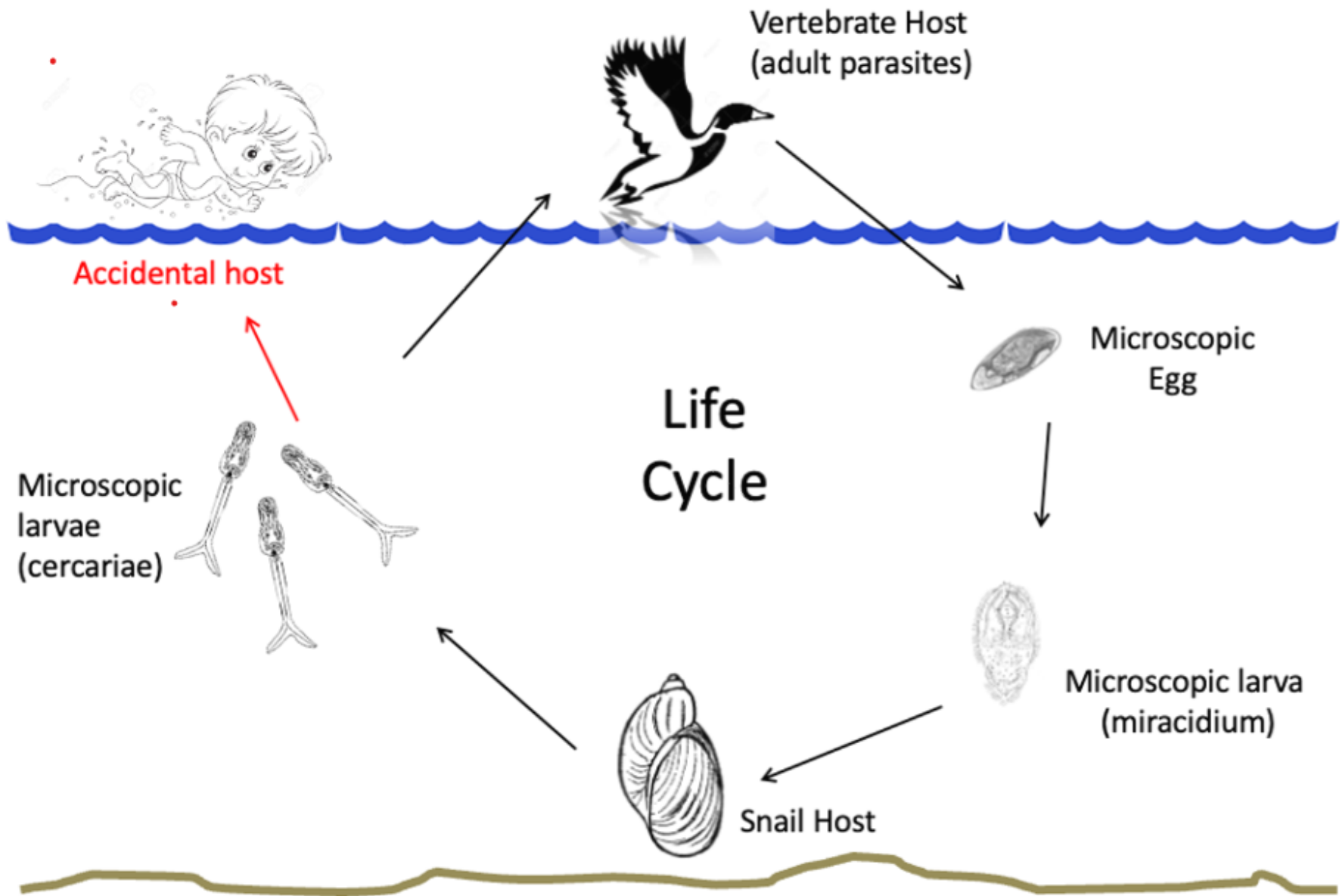
When Hance talked to other Pelican Lake residents, they reported similar experiences. Swimmer's itch had a profound impact on people's ability to



Volume



ON AIR  
SNAP JUDGMENT WITH GLYNN WASHINGTON



# Volunteer opportunity #4

Reach out to swimmers itch researchers for additional or more recent information

Curt Blankespoor Jackson College

Amanda Schuermann MAISRC



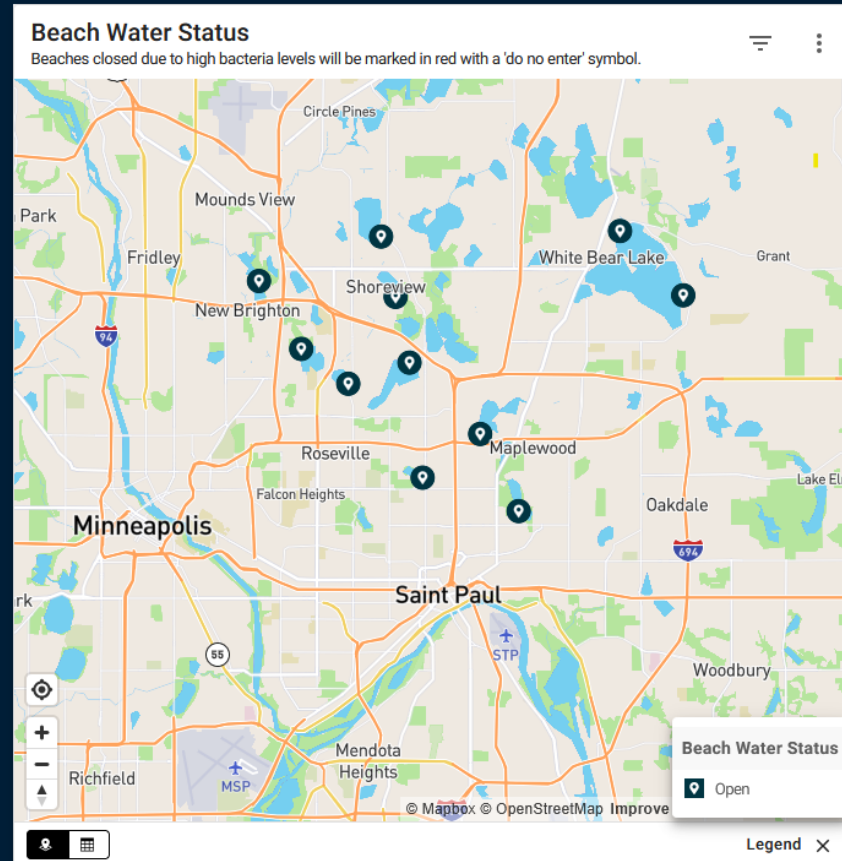
# Beach water quality



## Beach Water Status

Each week, two samples are taken from Ramsey County beaches to test E. coli levels. As a safety precaution, Ramsey County will close a beach if the one-day sample mean exceeds 1260 organisms per 100 mL sample or the 30-day sample mean exceeds 126 organisms per 100 mL sample. Beaches will reopen when sample levels are back within state guidelines.

Due to long turnaround time on the microcystin testing, we will do on-site inspections and additional testing if a beach tests over the limit; the beach will open or close based on those values.



**Beach Water Status**  
Beaches closed due to high bacteria levels ...

Beach	Status	Date
Lake Gervais	Open	08/26/2025
Lake Johanna	Open	08/26/2025
Lake Josephine	Open	08/26/2025
Lake McCarrons	Open	08/26/2025
Lake Owasso	Open	08/26/2025
Lake Phalen	Open	08/26/2025
Long Lake	Open	08/26/2025
Mahtomedi Beach	Open	08/26/2025
Snail Lake	Open	08/26/2025
Turtle Lake	Open	08/26/2025
White Bear Lake	Open	08/26/2025

1 to 11 of 11

# 2025 Carp Capture

Total carp captured: 81 (across 3 dates)

Total weight: 680 lbs.

Average length 26.2 inches

Contractor: Carp Solutions

Coordinating body: RWMWD



Nets installed: May 6  
Nets removed: June 17

PIT measurements in April indicated high volumes  
4:30am: highest detections  
11:00am: lowest detections



# Goose nesting 4/21/2026



# Volunteer opportunity #5


## Investigate and coordinate goose roundup

Est.time commitment:  
5 hours per year  
Key players:

Chris Heim  
Goose Crew  
507-272-7004  
[Canadagoosemanagement@gmail.com](mailto:Canadagoosemanagement@gmail.com)


City of Shoreview MN  
Jeremy Walters  
651-490-4667  
[jwalters@shoreviewmn.gov](mailto:jwalters@shoreviewmn.gov)

City of Roseville MN  
James Taylor  
651-792-7107  
[James.e.taylor@cityofroseville.com](mailto:James.e.taylor@cityofroseville.com)



apps.fws.gov/rcgr/

Sites Booking.com McAfee Security Adobe offers Booking.com | Official ... Getting Started Most Visited Bookmarks Menu

 FWS: Resident Canada Goose Registration

## Resident Canada Goose Registration

**IMPORTANT**

RCGR has been updated. Please refer to the [User Guide](#) for more detailed information about the new changes.

Notable changes:

- Users are now required to log in with a **Login.gov** account. If you do not have a Login.gov account, please visit [Login.gov](#) site.
- If you had an account on the old site, it is **highly recommended** to log in with a Login.gov account that uses the old account ID. The old account ID will be available after logging in.
- Registration is now open throughout the year.
- Adding reports are now required by December 31, with a 1 month grace period.
- An account may now add multiple registrations, so multiple accounts are no longer required.

Welcome to the Resident Canada Goose Nest and Egg Registration Site. If you are a landowner, homeowner's association, public utility, or other person or organization in the lower 48 states or the District of Columbia, you may register at this site for federal authorization to destroy resident Canada goose nests and eggs within your jurisdiction.

You must register each year prior to taking nests and eggs. You may register at any time during the year in which the nests are taken. You must provide the individual names of employees or agents who may conduct the work on your behalf. You must be at least 18 years of age and a resident of the United States.

Each registrant must return by December 31, with a 30 day grace period, to report the number of nests with eggs which were taken. You must report even if you conducted no activity. You will not be able to register for future seasons if you have an outstanding registration.

Please note that some states do not participate in this registration program or have additional or stricter requirements. It is your responsibility to check with your state's [Agency Contacts and Information](#) to determine whether you should proceed with registration.

60+ turtle sitings in 10 minutes  
South bay 4/21/2026



Prescribed burn  
4/15/2026

To regerminate for  
next generation

Perfomed on North  
wind days to dissipate  
smoke





Lake Restoration – a pilot project by MAISRC  
transplanting native plants from a donor lake



# Courage Center Program



Wednesday nights in July (5:30pm to 8:30pm)



Normally clockwise direction

Chase boat - follows on inside track

All volunteer program



# New Business



*Lake Owasso  
Association, Inc.*

# Motion to adjourn



*Lake Owasso  
Association, Inc.*

Photo: Courtesy of Mary Tragiai